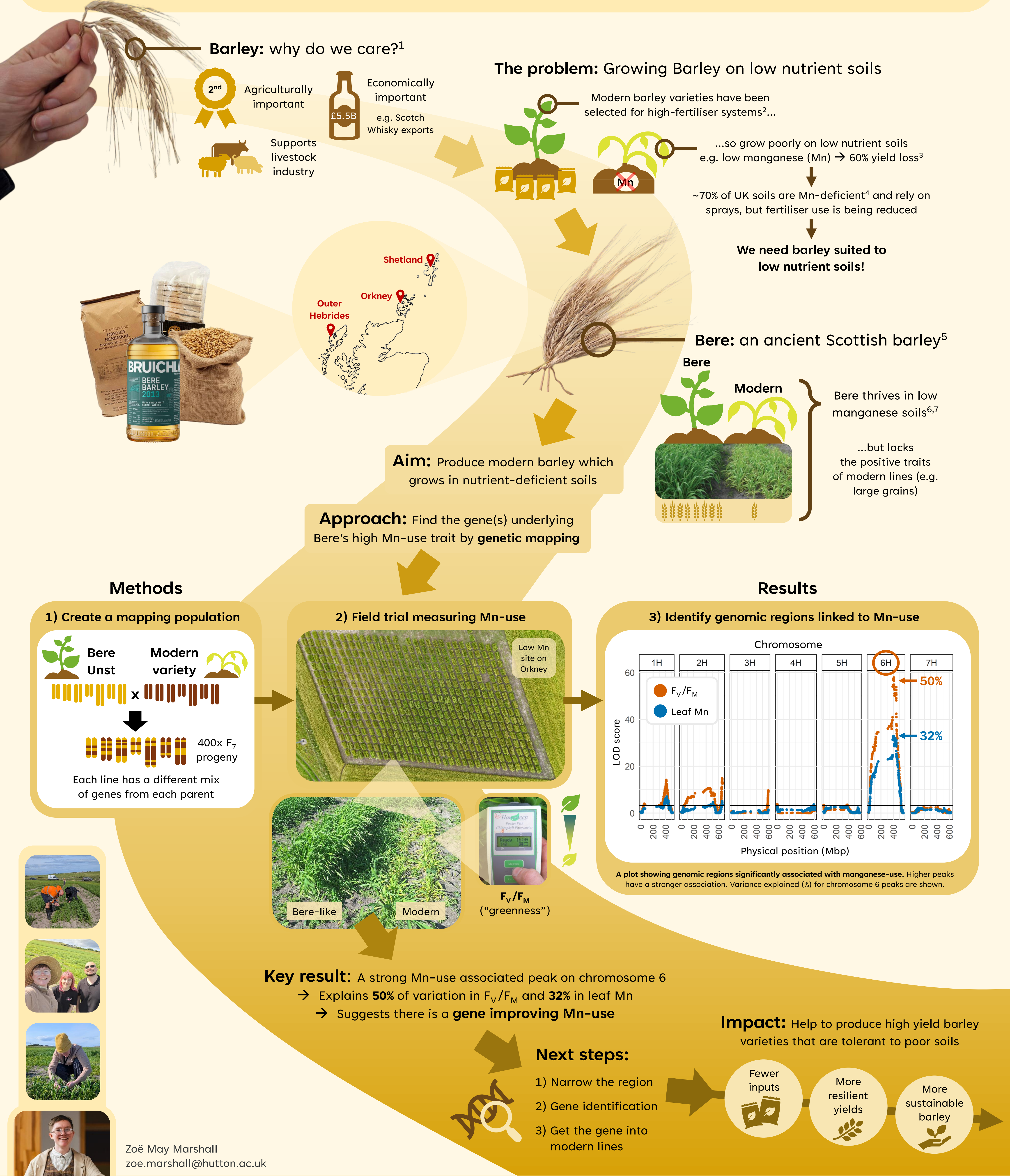


Improving nutrient-use in barley using ancient genetics

Using an ancient Scottish barley landrace to understand and improve manganese (Mn)-use efficiency in an iconic British crop

Zoë Marshall^{1,2}, Chiara Campoli¹, Tim George³, Davide Bulgarelli², Allan Logan⁴, and Joanne Russell¹

¹Cell and Molecular Sciences, The James Hutton Institute, Dundee, UK
²Division of Plant Sciences, School of Life Sciences, University of Dundee, Dundee, UK
³Ecological Sciences, The James Hutton Institute, Dundee, UK
⁴Bruichladdich Distillery, Isle of Islay, UK



Zoë May Marshall
 zoe.marshall@hutton.ac.uk

Acknowledgements: Thanks to my supervisors (Joanne Russell, Chiara Campoli, Tim George, Davide Bulgarelli and Allan Logan), previous project contributors (Allan Booth, Sidsel Schmidt and Ronja Wonneberger), staff who assisted on Orkney (Henry Creissen, John Wishart, Ruth Hamilton, Laurie Brown, Molly Brown, Martin Bruce and Luke Ramsay) and Evie Meale.
References: 1 The James Hutton Institute (2023). *International Barley Hub*. About barley. 2 Dawson et al. (2015). *New Phytologist*, 206(3), 913–931. 3 Schmidt et al. (2016). *Trends in Plant Science*, 21(7), 622–632. 4 Fielder (2024). *Fielder services Ltd*. 5 Jarman (1996). *Plant Varieties and Seeds*, 9, 191–196. 6 Cope et al. (2020). *Annals of Botany*, 126(2), 289–300. 7 Schmidt et al. (2019). *Annals of Botany*, 123, 831–843.