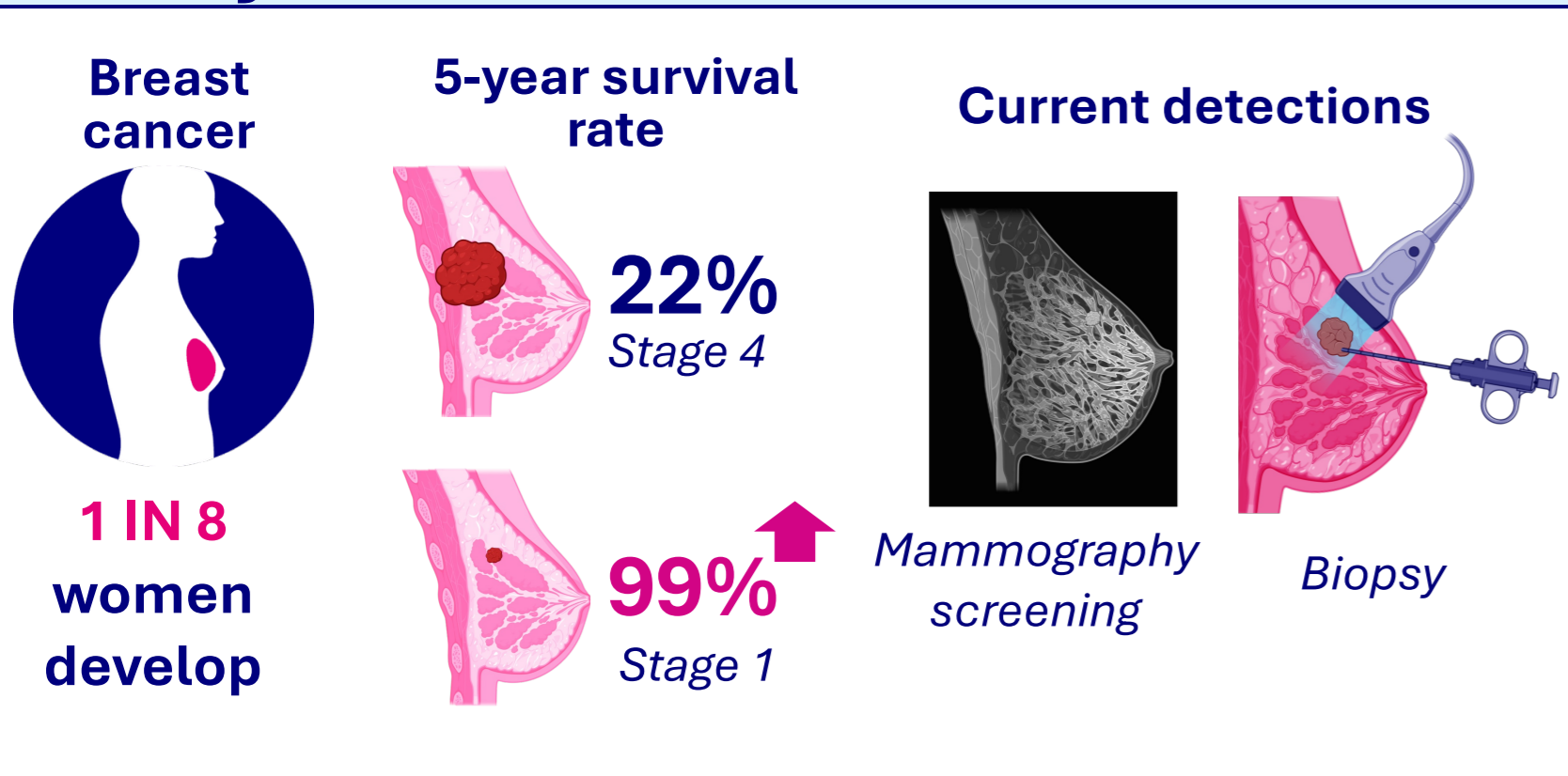


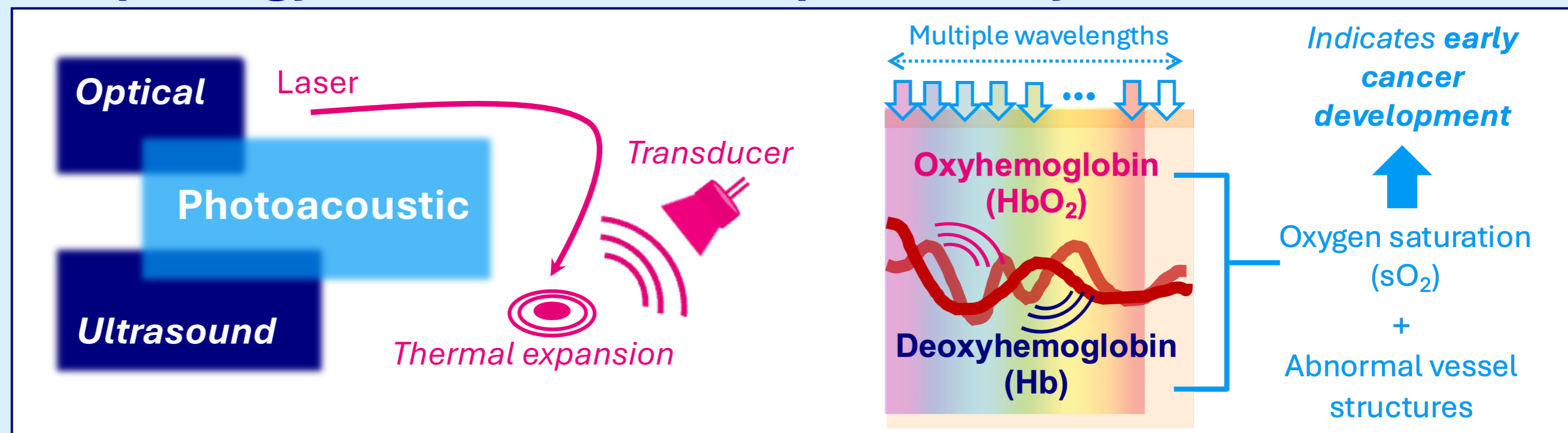
Towards equitable photoacoustic imaging for early cancer detection

Amy Yijie Zheng, Ben Cox, Sarah Bohndiek

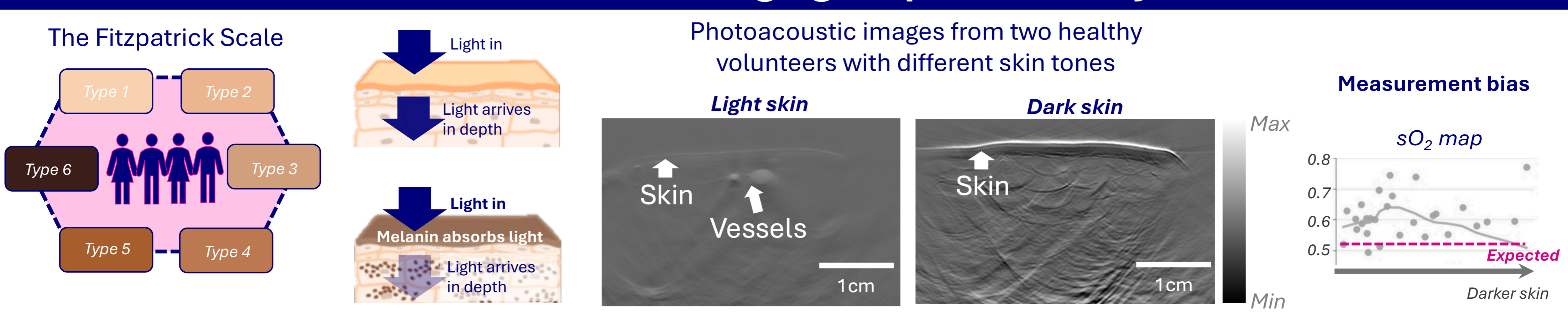
Early cancer detection saves lives



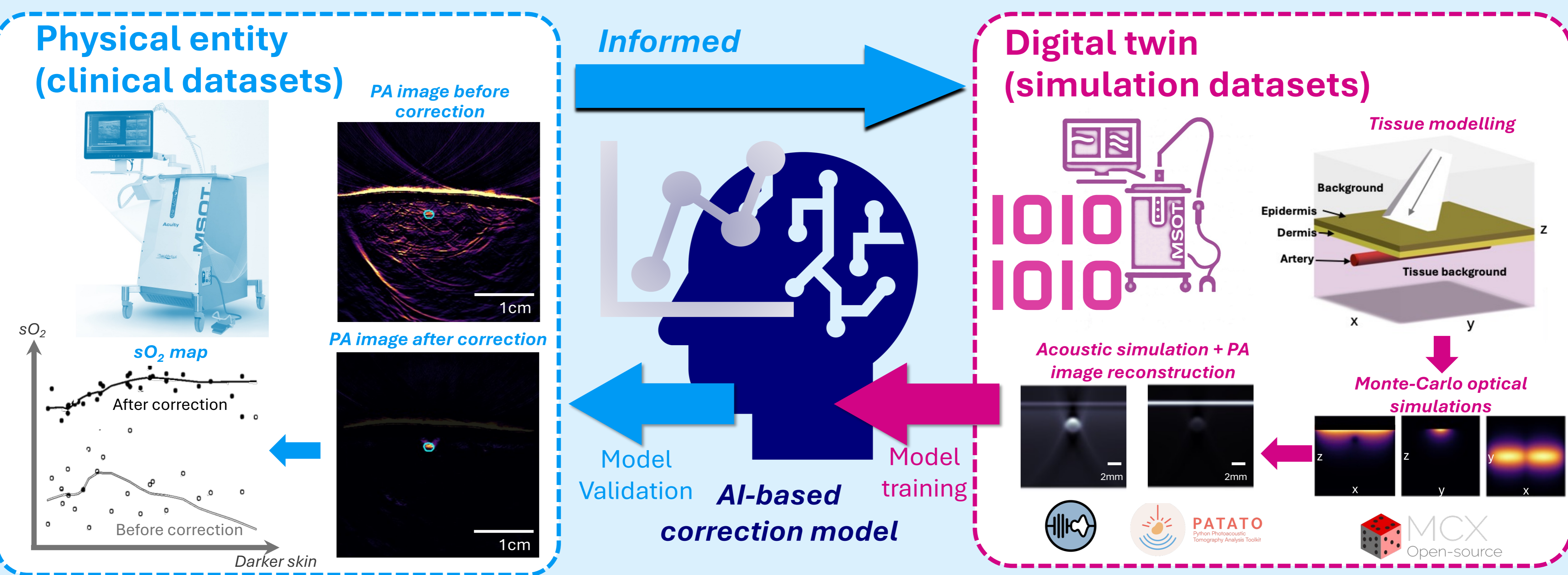
Photoacoustic imaging (PAI) resolves blood vessel morphology and function to improve early cancer detection



Problem: Photoacoustic imaging outputs differ by skin tones



Solution: We developed *digital-twin* inspired AI to learn and correct skin tone effects in real clinical PAI



Why this matters for patients and healthcare ?

